

## Viridans FIS-VFD Tutorial 1 - USB

### Task:

#### Investigate *Eremophila longifolia*.

- Find the plant in the FIS.
- Print a copy of a photograph, map and written description of the species.
- Plot the distribution of the species on a map of Victoria.
- Export the map, in Windows Metafile format, so that it can be incorporated into a report.

#### The products of this task should be:

- A printed page, with a written description, distribution map and photograph of *Eremophila longifolia*.
- A map, in Windows Metafile format, of Victoria with the distribution of *Eremophila longifolia* superimposed.

- Site Data Multi-maps Land Use (1:1,000,000-1:100,000)
- Site Data Multi-maps Land Use (1:1,000,000-1:100,000 Low Contrast)
- Site Data 1:400,000 Land Use
- Site Data 1:250,000 Land Use
- Site Data 1:100,000 Melbourne EVCs
- Site Data 1:1,000,000 Map Themes
- Edit Site Data
- Site Data Printouts
- Subset Data from a List of Sites
- Incorporate Site Data
- Data Validation
- Repair Database Files
- Sites on Species Attributes
- Header Search
- Climate Profiles
- Similarity Analysis
- Nearest Neighbour Analysis
- Two-way Table Sorting
- Character Species
- Data Export
- Help
- Close



Full Species List

Area Species List

Search an Area

Select and Plot Sites

Plot multiple species

Help

Close



Enter Scientific Name  Find Name Sort on Common Name

Click on column buttons for interpretation of this list. Find the best match to the name typed in the box on the left. Scientific Name Order: Full List: 7915 species

F	A	S	O	Scientific Name	Common Name	Family Name	Sp Code
		*		Abelia X grandiflora	Glossy Abelia	Caprifoliaceae	5381
	v			Abrotanella nivigena	Snow-wort	Asteraceae	0001
f	e			Abutilon fraseri	Dwarf Lantern-flower	Malvaceae	0002
f	e			Abutilon fraseri subsp. diplotrichum	Dwarf Lantern-flower	Malvaceae	4758
f	e			Abutilon fraseri subsp. fraseri	Dwarf Lantern-flower	Malvaceae	4757
		*		Abutilon grandifolium	Abutilon	Malvaceae	7697
		*		Abutilon indicum	Indian Lantern-flower	Malvaceae	7814
f	e			Abutilon malvifolium	Mallow-leaf Lantern-flower	Malvaceae	4199
	v			Abutilon otocarpum	Desert Lantern	Malvaceae	0003
f	e			Abutilon oxycarpum var. subsagittatum	Flannel Weed	Malvaceae	4200
		*		Abutilon pictum	Flowering Maple	Malvaceae	7307
				Abutilon spp.	Lantern Flower	Malvaceae	8002
		*		Abutilon theophrasti	Chingma Lantern	Malvaceae	0005
				Acacia acanthoclada subsp. acanthoclada	Harrow Wattle	Mimosaceae	0006
				Acacia acinacea s.l.	Gold-dust Wattle	Mimosaceae	0007
				Acacia acinacea s.s.	Gold-dust Wattle	Mimosaceae	4778
				Acacia aculeatissima	Thin-leaf Wattle	Mimosaceae	0008
		*		Acacia acuminata subsp. acuminata	Raspberry Jam	Mimosaceae	9756
	r			Acacia alpina	Alpine Wattle	Mimosaceae	0009
				Acacia alpina x dallebiana	Alpine Wattle x Catlin Wattle hybrid	Mimosaceae	9757

Enter name or nearest abbreviation

**General Appearance:** A dense shrub to 2 m tall, with dark green foliage and masses of white, tubular flowers.  
**Leaves:** Smooth, hairless, opposite, to 4 x 3 cm, margins finely toothed.  
**Flowers:** White or pale pink, tubular, to 3 x 1.5 cm. (Sep Oct Nov Dec Jan)  
**Place of Origin:** China  
**Notes:** A hybrid between *Abelia chinensis* and *Abelia uniflora*.  
**Authority:** (Andre) Rehder  
**Note on Scientific Name:** [X] A hybrid which was originally described as a species in its own right.  
**Conservation:** [\*] Introduced to Victoria since European settlement.  
**Place of Origin:** China  
**Annual Rainfall:** 640 to 822 mm  
**Warmest Temperatures:** 24 to 26 °C  
**Coollest Temperatures:** 5 to 7 °C  
**Altitude:** 60 to 60 m ASL



Photographer: Paul Gullan/Viridans Images

Exit  
 Help  
 Set Filters - Full  
 Apply Filters  
 Set Filters - Quick  
 Show Current Filters  
 Print or Export List in Alphabetic Order  
 Print or Export List in Systematic Order  
 Plot Distribution Map  
 Databases  
 Print Picture Text and Map  
 Display Larger Picture  
 Image 1 of 1

FIS 2013 - Multi-Map

Enter Scientific Name  Find Name Sort on Common Name

Scientific Name Order : Full List : 7915 species

Click on column buttons for interpretation of this list

F	A	S	O	Scientific Name	Common Name	Family Name	Sp Code
		*		Eragrostis minor	Smaller Stink-grass	Poaceae	1696
				Eragrostis parviflora	Weeping Love-grass	Poaceae	1193
	k			Eragrostis pergracilis	Small Love-grass	Poaceae	5254
		*		Eragrostis pilosa	Soft Love-grass	Poaceae	1194
	v			Eragrostis setifolia	Bristly Love-grass	Poaceae	1195
				Eragrostis spp.	Love Grass	Poaceae	8398
		*		Eragrostis superba	Heartseed Grass	Poaceae	5255
		*		Eragrostis tef	Teff	Poaceae	5256
	r	#		Eragrostis trachycarpa	Rough-grain Love-grass	Poaceae	1197
f	v			Eremophila bignoniiflora	Bignonia Emu-bush	Myoporaceae	1198
	r			Eremophila crassifolia	Thick-leaf Emu-bush	Myoporaceae	1199
	e			Eremophila debilis	Winter Apple	Myoporaceae	7464
				Eremophila deserti	Turkey Bush	Myoporaceae	2237
	r			Eremophila divaricata subsp. divaricata	Thin-leaf Emu-bush	Myoporaceae	1200
	r			Eremophila gibbifolia	Cocoid Emu-bush	Myoporaceae	1201
				Eremophila glabra	Common Emu-bush	Myoporaceae	1202
				Eremophila glabra subsp. glabra	Common Emu-bush	Myoporaceae	4481
				Eremophila glabra subsp. murrayana	Sprawling Emu-bush	Myoporaceae	4482
				Eremophila longifolia	Berrigan	Myoporaceae	1203
				Eremophila maculata subsp. maculata	Spotted Emu-bush	Myoporaceae	1204

**Display shows description and image of selected species**

**General Appearance:** A spreading shrub or small tree to 6 m tall, with drooping, narrow, grey-green leaves and deep orange, tubular flowers, borne singly in leaf axils.

**Leaves:** Linear, mostly alternate, to 18 x 1 cm, dull, grey-green, covered with fine, short hairs, hanging downwards on drooping branchlets.

**Flowers:** Deep orange and covered with short fine hairs, tubular, to 3 cm long, hanging downwards on short, slender stalks. Petals 5, joined for most of their length into an arched tube with five, uneven, curled lobes; the inside or the lobes are pale orange with darker spots. Sepals 5, green, triangular, pressed against base of flower tube. Stamens protruding from flower. (Jan Feb Mar Apr May Jun Jul Aug Sep Oct Nov Dec)


**Fruit:** Ovoid to oblong, dark brown, fleshy, to 12 x 12 mm.

**Environment:** Sandy soils in woodlands of low rainfall areas.

**Butterfly Food Plant:** Food for caterpillars of Rayed Blue.

**Authority:** (R. Br.) F. Muell.

**Other States:** NSW/NT/QLD/SA/WA



**Click here**

Print Picture Text and Map

Display Larger

Create and print the selected image and text in an A4 format

Photographer: Paul Gullan/Viridans Images

Image 1 of 1

Print

The combined display may be sent to a printer in landscape mode

Printer Setup

Reset Picture

Reset Map

Help

Exit

Click to return to previous screen

### Eremophila longifolia - Berrigan

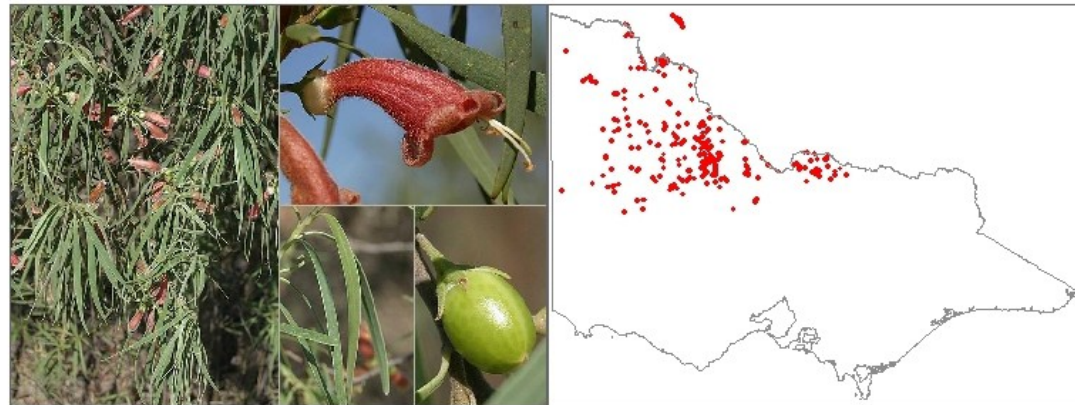


Photo by: Paul Gullan/Viridans Images

**General Appearance:** A spreading shrub or small tree to 6 m tall, with drooping, narrow, grey-green leaves and deep orange, tubular flowers, borne singly in leaf axils.

**Leaves:** Linear, mostly alternate, to 18 x 1 cm, dull, grey-green, covered with fine, short hairs, hanging downwards on drooping branchlets.

**Flowers:** Deep orange and covered with short fine hairs, tubular, to 3 cm long, hanging downwards on short, slender stalks. Petals 5, joined for most of their length into an arched tube with five, uneven, curled lobes; the inside of the lobes are pale orange with darker spots. Sepals 5, green, triangular, pressed against base of flower tube. Stamens protruding from flower. (Jan Feb Mar Apr May Jun Jul Aug Sep Oct Nov Dec)

**Fruit:** Ovoid to oblong, dark brown, fleshy, to 12 x 12 mm.

**Environment:** Sandy soils in woodlands of low rainfall areas.

**Butterfly Food Plant:** Food for caterpillars of Rayed Blue.

**Authority:** (R. Br.) F. Muell.

**Other States:** NSW NT QLD SA WA

**Annual Rainfall:** 309 to 423 mm

**Warmest Temperatures:** 31 to 33 °C

**Coolest Temperatures:** 2 to 4 °C

**Altitude:** 63 to 121 m ASL

Enter Scientific Name  Find Name Sort on Common Name

Scientific Name Order : Full List : 7915 species

Click on column buttons for interpretation of this list

F	A	S	O	Scientific Name	Common Name	Family Name	Sp Code
		*		Eragrostis minor	Smaller Stink-grass	Poaceae	1696
				Eragrostis parviflora	Weeping Love-grass	Poaceae	1193
	k			Eragrostis pergracilis	Small Love-grass	Poaceae	5254
		*		Eragrostis pilosa	Soft Love-grass	Poaceae	1194
	v			Eragrostis setifolia	Bristly Love-grass	Poaceae	1195
				Eragrostis spp.	Love Grass	Poaceae	8398
		*		Eragrostis superba	Heartseed Grass	Poaceae	5255
		*		Eragrostis tef	Teff	Poaceae	1196
	r	#		Eragrostis trachycarpa	Rough-grain Love-grass	Poaceae	1197
f	v			Eremophila bignoniiflora	Bignonia Emu-bush	Myoporaceae	1198
	r			Eremophila crassifolia	Thick-leaf Emu-bush	Myoporaceae	1199
	e			Eremophila debilis	Winter Apple	Myoporaceae	7464
				Eremophila deserti	Turkey Bush	Myoporaceae	2237
	r			Eremophila divaricata subsp. divaricata	Spreading Emu-bush	Myoporaceae	1200
	r			Eremophila gibbifolia	Coccid Emu-bush	Myoporaceae	1201
				Eremophila glabra	Common Emu-bush	Myoporaceae	1202
				Eremophila glabra subsp. glabra	Common Emu-bush	Myoporaceae	4481
				Eremophila glabra subsp. murrayana	Sprawling Emu-bush	Myoporaceae	4482
				Eremophila longifolia	Berrigan	Myoporaceae	1203
				Eremophila maculata subsp. maculata	Spotted Emu-bush	Myoporaceae	1204

Click here

Exit

Help

Set Filters - Full

Apply Filters

Set Filters - Quick

Show Current Filters

Print or Export List in Alphabetic Order

Print or Export List in Systematic Order

Plot Distribution Map

Plot distribution of highlighted species on a map

**General Appearance:** A spreading shrub or small tree to 6 m tall, with drooping, narrow, grey-green leaves and deep orange, tubular flowers, borne singly in leaf axils.

**Leaves:** Linear, mostly alternate, to 18 x 1 cm, dull, grey-green, covered with fine, short hairs, hanging downwards on drooping branchlets.

**Flowers:** Deep orange and covered with short fine hairs, tubular, to 3 cm long, hanging downwards on short, slender stalks. Petals 5, joined for most of their length into an arched tube with five, uneven, curled lobes; the inside or the lobes are pale orange with darker spots. Sepals 5, green, triangular, pressed against base of flower tube. Stamens protruding from flower. (Jan Feb Mar Apr May Jun Jul Aug Sep Oct Nov Dec)

**Fruit:** Ovoid to oblong, dark brown, fleshy, to 12 x 12 mm.

**Environment:** Sandy soils in woodlands of low rainfall areas.

**Butterfly Food Plant:** Food for caterpillars of Rayed Blue.

**Authority:** (R. Br.) F. Muell.

**Other States:** NSW/NT/QLD/SA/WA



Print Picture Text and Map

Display Larger Picture

Highlight any technical word then right-click mouse to find its meaning

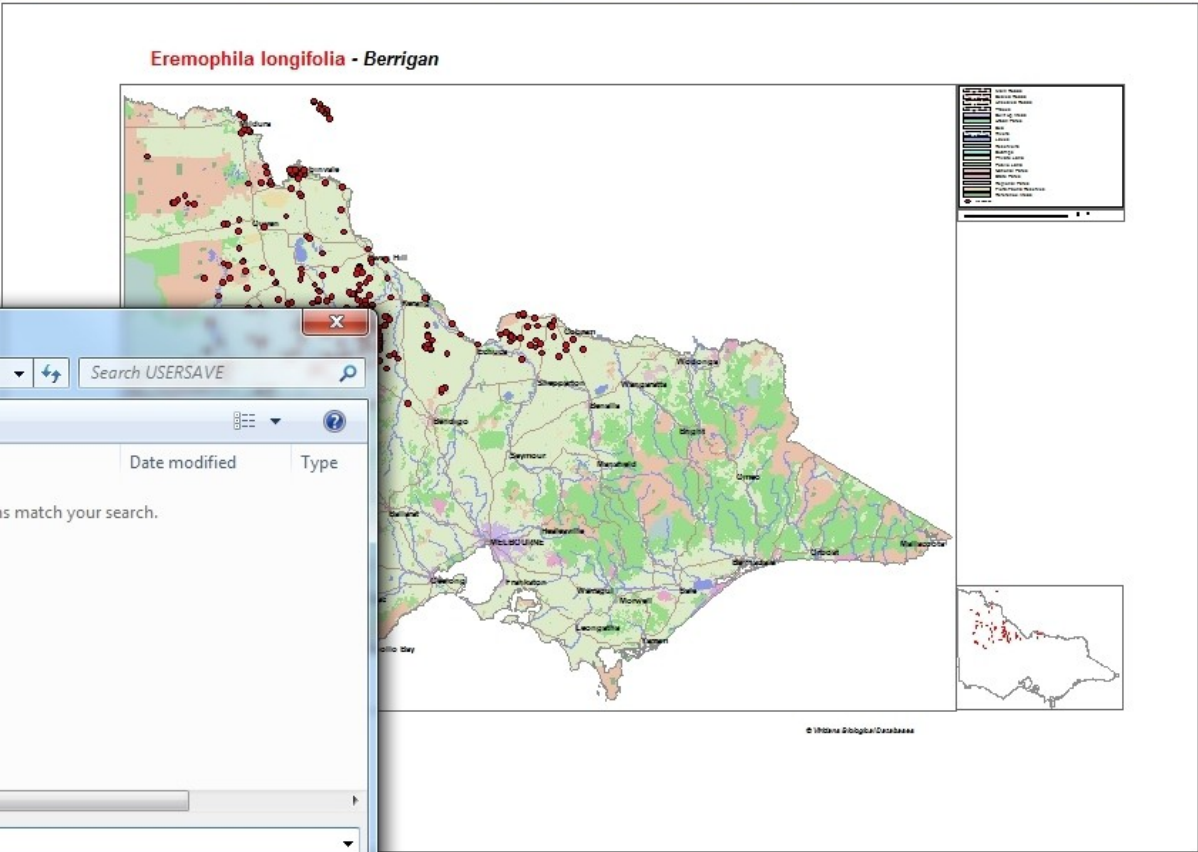
Photographer: Paul Gullan/Viridans Images

Image 1 of 1



- Print
- Printer Setup
- Reset Map
- Save Map
- Help
- Exit

Click here and a window will open which allows you to save a copy of the map as a vector WMF file.



Save As

FIS2013 \USERSAVE

Search USERSAVE

Organize New folder

- Documents
- Music
- Pictures
- Videos
- Homegroup
- Computer
  - Local Disk (C:)
  - Seagate Development (E:)
  - Local Disk (F:)
  - greybook (g) (\Alex) (X:)

Name Date modified Type

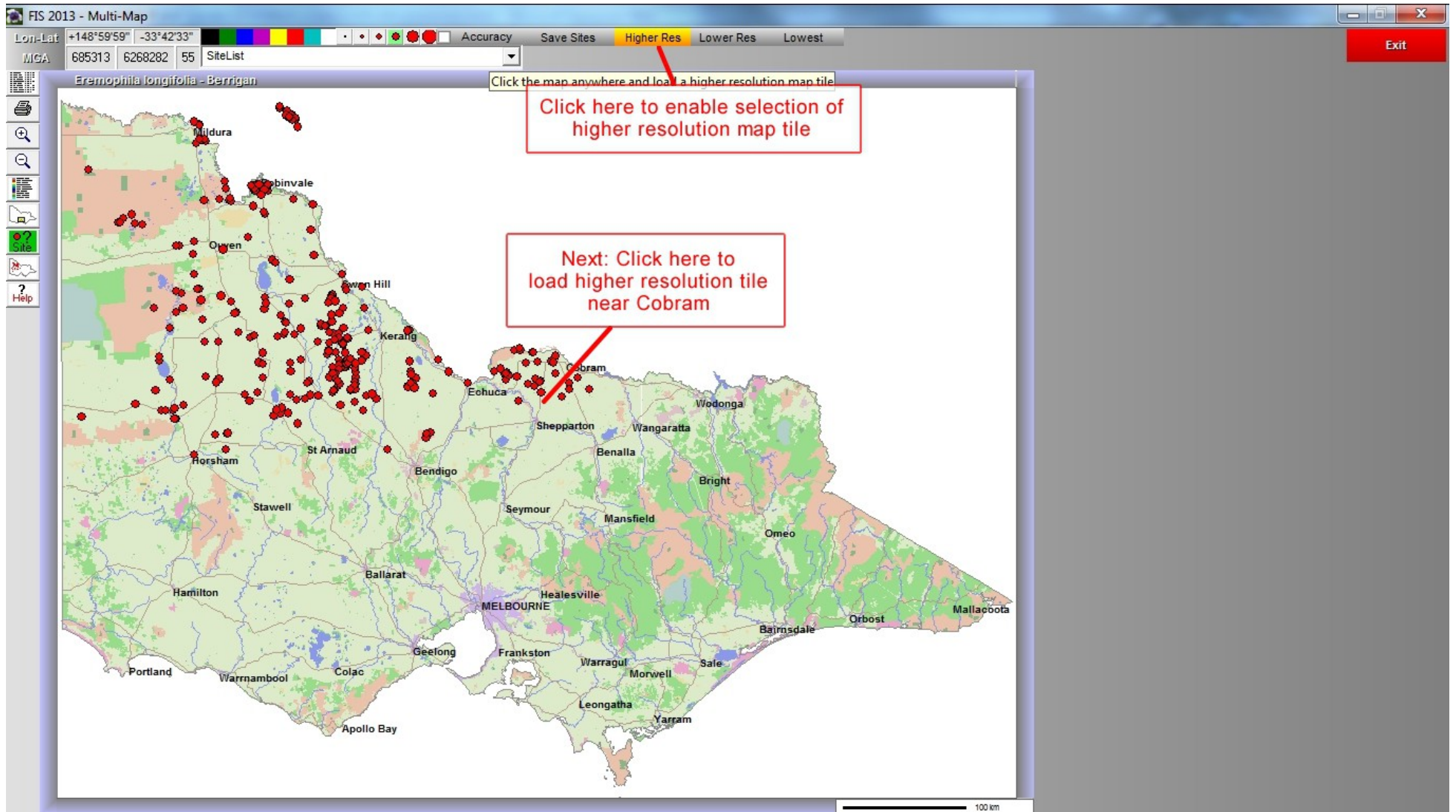
No items match your search.

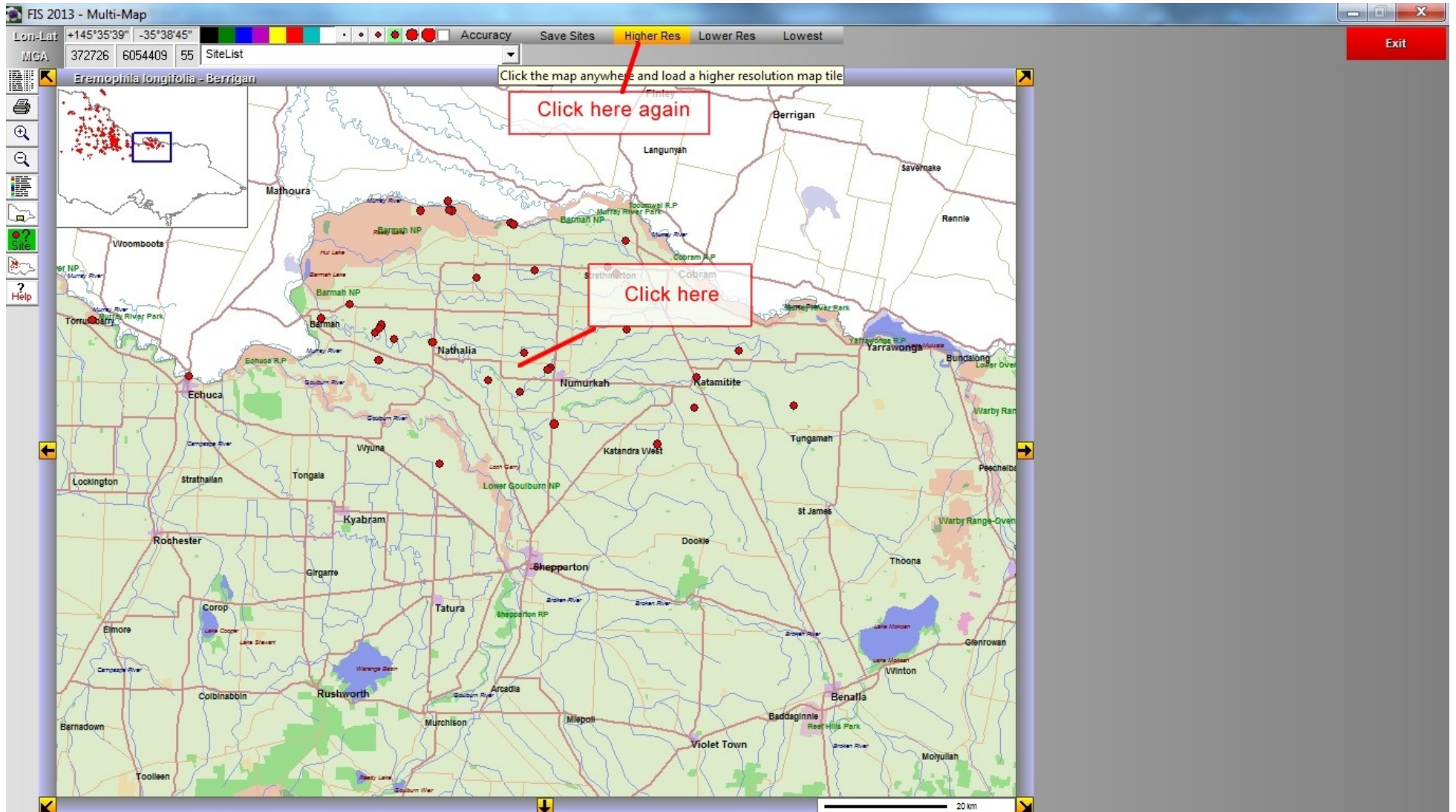
File name:

Save as type: Windows Metafiles (\*.wmf)

Hide Folders

Save Cancel







e:\fis2013\VIC\VIC100K\DULL09\VM17\_22.wmf

Lon-Lat +144°59'26" -36°01'17" Accuracy Save Higher Res Lower Res Lowest

MGA 318930 6011798 55 U2500800 22 Oct 1996 ±1 min (~2km) sab;hs

**Click on the site ID to display its contents**

Eremophila longifolia - Berrigan U2500800 : 29 Recs : 22 Oct 1996 : +144°59'26" -36°01'17" : [±1 min] : Col. sab;hs Edit Site X

Save to List Add to List

F	A	V	O	Scientific Name	Common Name	Code	Qty
				Allocasuarina luehmannii	Buloke	0678	+
				Anthosachne scabra s.l.	Common Wheat-grass	0146	+
				Austrostipa eremophila	Desert Spear-grass	3274	+
				Austrostipa scabra subsp. falcata	Rough Spear-grass	3275	+
				Carex inversa	Knob Sedge	0642	+
				Crassula decumbens var. decumbens	Spreading Crassula	0860	+
				Crassula sieberiana s.l.	Sieber Crassula	0866	+
				Einadia nutans	Nodding Saltbush	1133	+
				Enteropogon acicularis	Spider Grass	1160	+
				Eremophila longifolia	Berrigan	1203	+
				Eucalyptus microcarpa	Grey Box	1298	+
			#	Euphorbia drummondii	Flat Spurge	0728	+
				Juncus radula	Hoary Rush	1837	+
			*	Lepidium africanum	Common Peppergrass	1896	+

**General Appearance:** A spreading shrub or small tree to 6 m tall, with drooping, narrow, grey-green leaves and deep orange, tubular flowers, borne singly in leaf axils.


**Leaves:** Linear, mostly alternate, to 18 x 1 cm, dull, grey-green, covered with fine, short hairs, hanging downwards on drooping branchlets.

**Flowers:** Deep orange and covered with short fine hairs, tubular, to 3 cm long, hanging downwards on short, slender stalks. Petals 5, joined for most of their length into an arched tube with five, uneven, curled lobes; the inside of the lobes are pale orange with darker spots. Sepals 5, green, triangular, pressed against base of flower tube. Stamens protruding from flower. (Jan Feb Mar Apr May Jun Jul Aug Sep Oct Nov Dec)

**Fruit:** Ovoid to oblong, dark brown, fleshy, to 12 x 12 mm.

**Environment:** Sandy soils in woodlands of low rainfall areas.

**Butterfly Food Plant:** Food for caterpillars of Rayed Blue.



Photographer: Paul Gullan/Viridans Images

Exit

**Click here to return to the species list**



