

Viridans FIS-VFD Tutorial 3 - Web

Task:

Use the FIS to find winter-flowering shrubs in the Big Desert area.

- Locate the Big Desert on a map of Victoria.
- Draw an outline around the Big Desert and surrounds.
- Search the FIS database for all records within that area.
- Create a list of all species within the search area.
- Generate a subset of that list containing only species categorised as shrubs which flower in the winter.
- Export the list as a PDF file.

The products of this task should be:

- A PDF file containing a list of winter-flowering shrubs found in or near the Big Desert.

[Find a Species](#)

[Search an Area](#)

[Access Site Data](#)

[General Information](#)

[FAQ](#)

[Logout](#)

Victorian
Flora Information
System



2013

Copyright © Viridans Biological Databases

Back



Victorian Flora Information System

? **Search from Base Map**
Use regional map with point-and-click to search

? **Search using Place Name**
Enter Place Name (minimum 3 characters)

? **Search using Geocode**

Longitude (DMS)	Latitude (DMS)	
<input type="text"/>	<input type="text"/>	
<small>7 digits</small>	<small>6 digits</small>	
Zone	Easting	Northing
<input type="text"/>	<input type="text"/>	<input type="text"/>
<small>2 digits</small>	<small>6 digits</small>	<small>7 digits</small>

? **Define a Circular Search Area**

Back

143°04'46" : 35°19'04" LonLat

54 689031 6089719 UTM

Zoom

x40

x35

x30

x25

x20

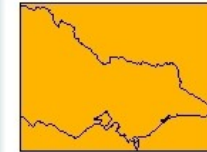
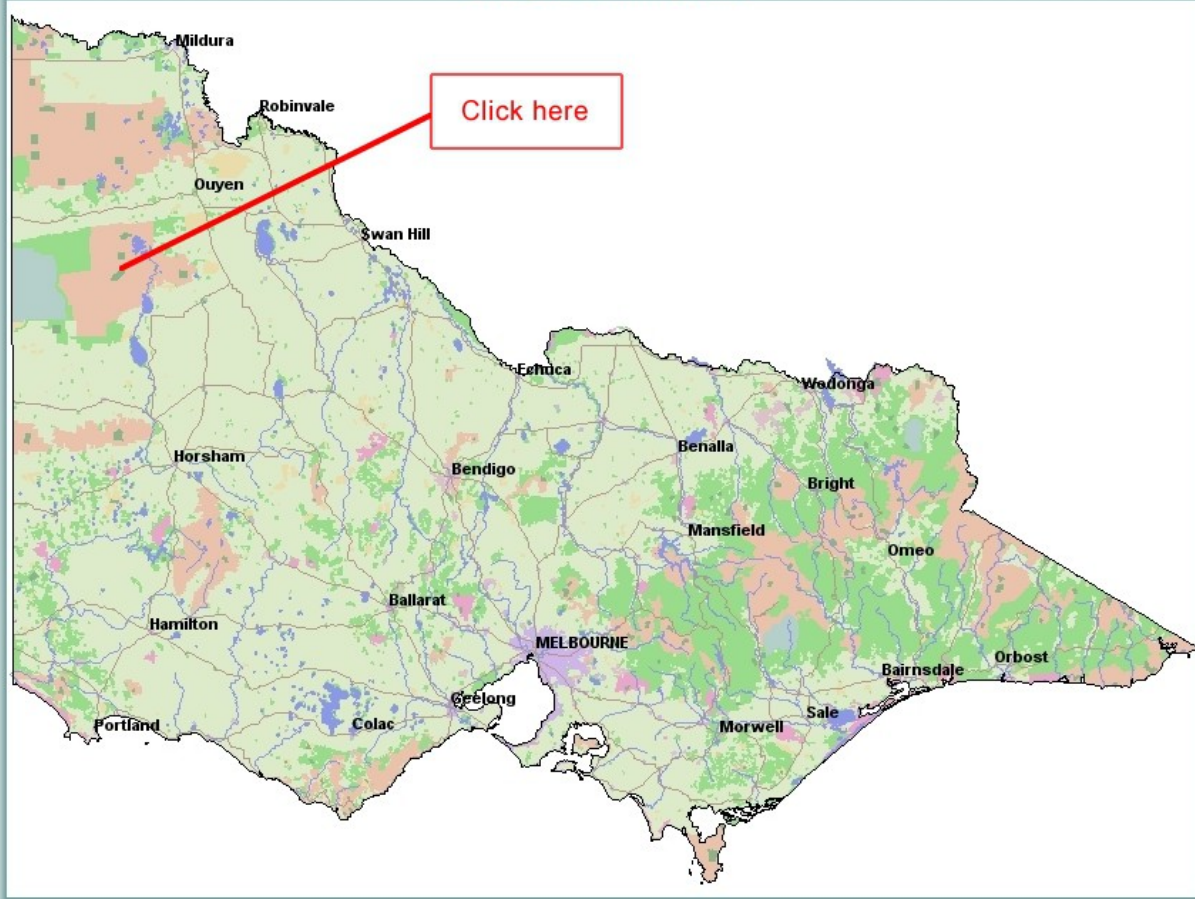
x10

x5

full

Print-Save
PDF

Click anywhere on the map to zoom



96 km

- Main Roads
- Sealed Roads
- Unsealed Roads
- Tracks
- Built Up Areas
- Urban Parks
- Sea
- Rivers
- Lakes
- Reservoirs
- Swamps
- Private Land
- Public Land
- National Parks
- State Parks
- Regional Parks
- Wildlife Reserves
- Wilderness Areas
- Reference Areas

Map Options

- Sketch a Search Area
- Search Sketched Area
- Get all data from sites
- Identify sites on map

Data modified from Viridans Flora Information System

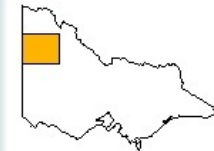
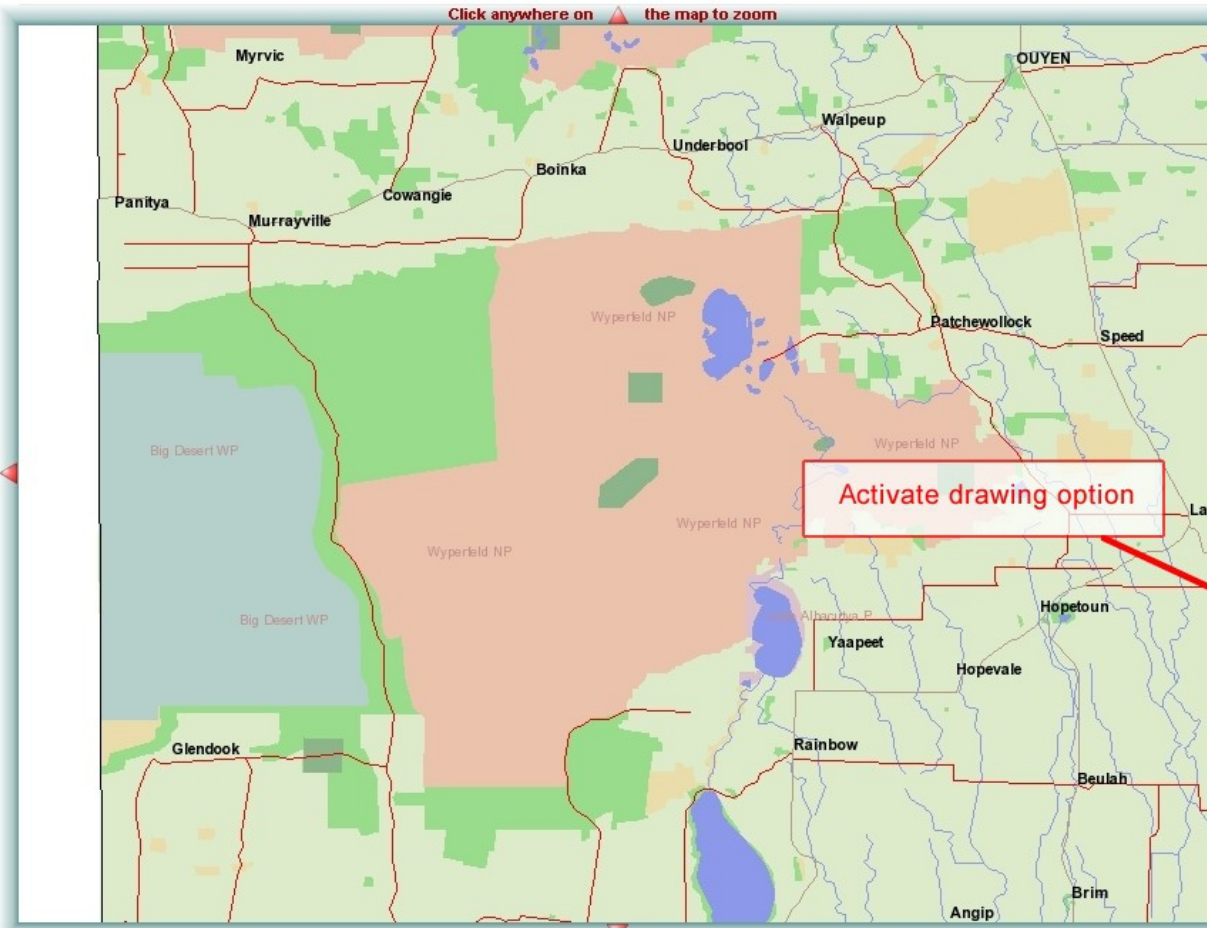
Back

142°30'28" : 35°17'21" LonLat

54 637107 6093833 UTM

Zoom x40 x35 x30 x25 x20 x10 x5 full

Print-Save PDF



19 km

- Main Roads
- Sealed Roads
- Unsealed Roads
- Tracks
- Built Up Areas
- Urban Parks
- Sea
- Rivers
- Lakes
- Reservoirs
- Swamps
- Private Land
- Public Land
- National Parks
- State Parks
- Regional Parks
- Wildlife Reserves
- Wilderness Areas
- Reference Areas

- Map Options
- Sketch a Search Area
 - Search Sketched Area
 - Get all data from sites
 - Identify sites on map

Data modified from Viridans Flora Information System

Back

141°32'50" : 35°16'49" LonLat

54 549765 6095724 UTM

Zoom

x40

x35

x30

x25

x20

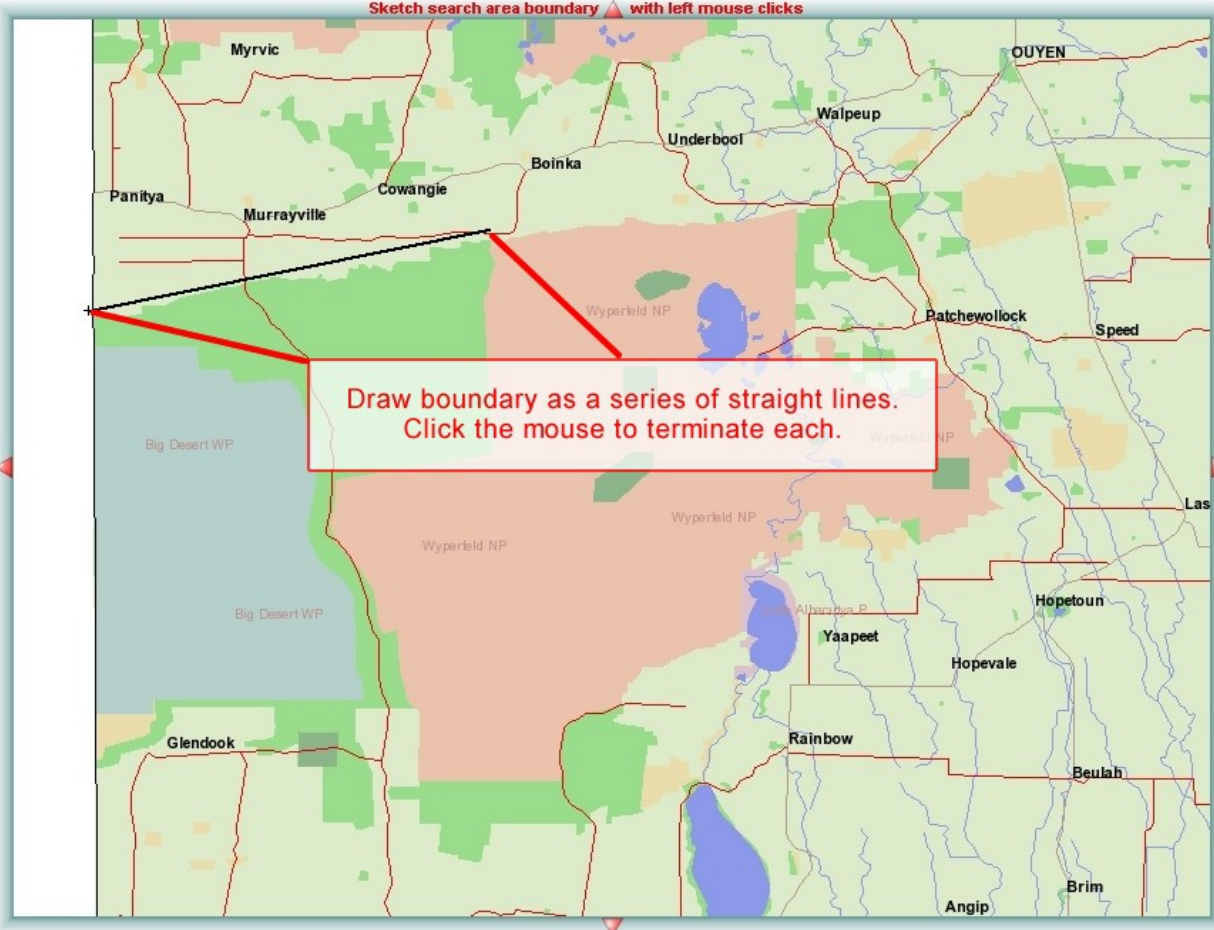
x10

x5

full

Print-Save PDF

Sketch search area boundary with left mouse clicks



19 km

- Main Roads
- Sealed Roads
- Unsealed Roads
- Tracks
- Built Up Areas
- Urban Parks
- Sea
- Rivers
- Lakes
- Reservoirs
- Swamps
- Private Land
- Public Land
- National Parks
- State Parks
- Regional Parks
- Wildlife Reserves
- Wilderness Areas
- Reference Areas

- Map Options**
- Sketch a Search Area
 - Search Sketched Area
 - Get all data from sites
 - Identify sites on map

Data modified from Viridans Flora Information System

Back

142°34'05" : 35°27'34" LonLat

54 642290 6074861 UTM

Zoom

x40

x35

x30

x25

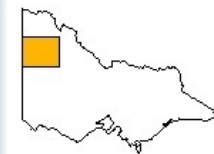
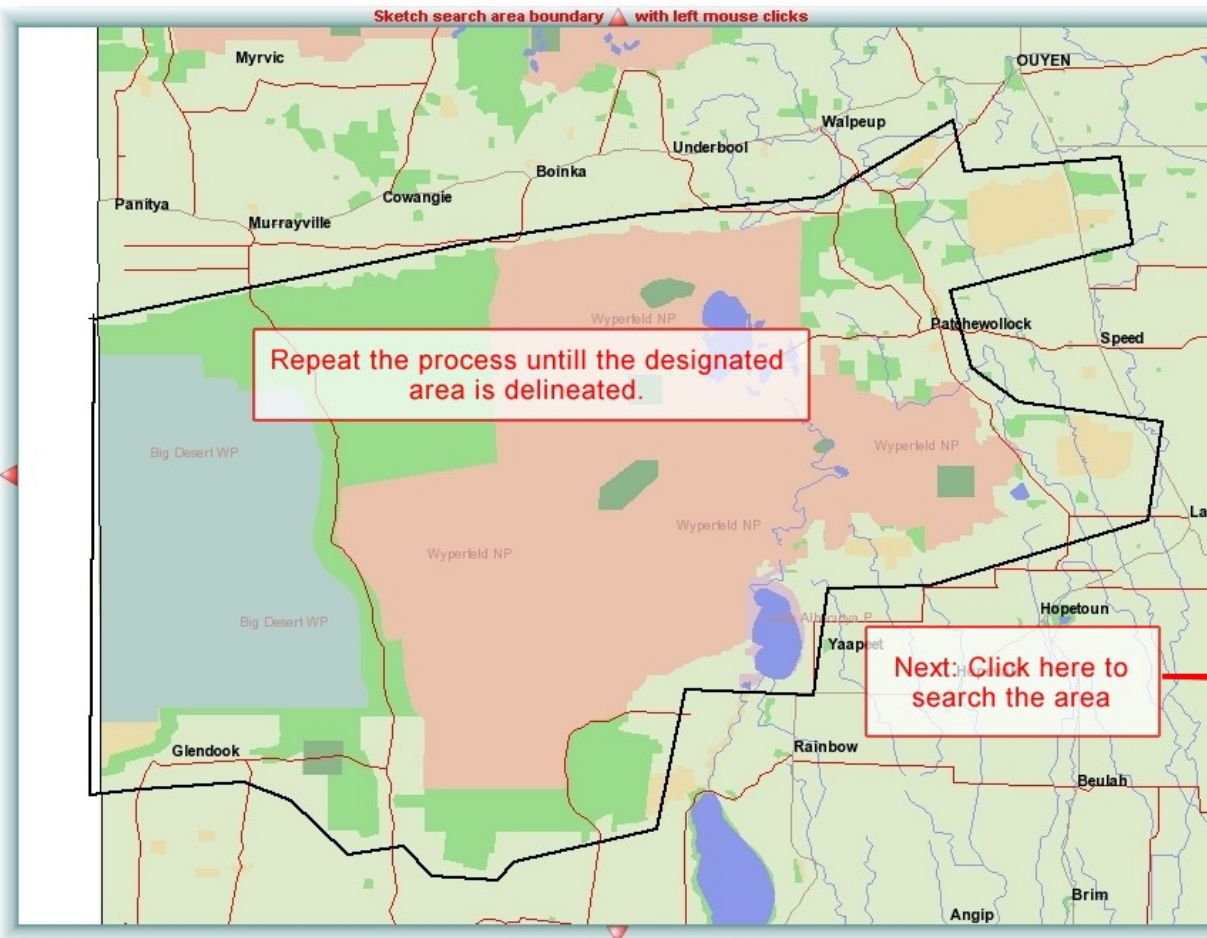
x20

x10

x5

full

Print-Save
PDF



19 km

- Main Roads
- Sealed Roads
- Unsealed Roads
- Tracks
- Built Up Areas
- Urban Parks
- Sea
- Rivers
- Lakes
- Reservoirs
- Swamps
- Private Land
- Public Land
- National Parks
- State Parks
- Regional Parks
- Wildlife Reserves
- Wilderness Areas
- Reference Areas

- Map Options
- Sketch a Search Area
 - Search Sketched Area
 - Get all data from sites
 - Identify sites on map

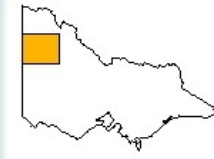
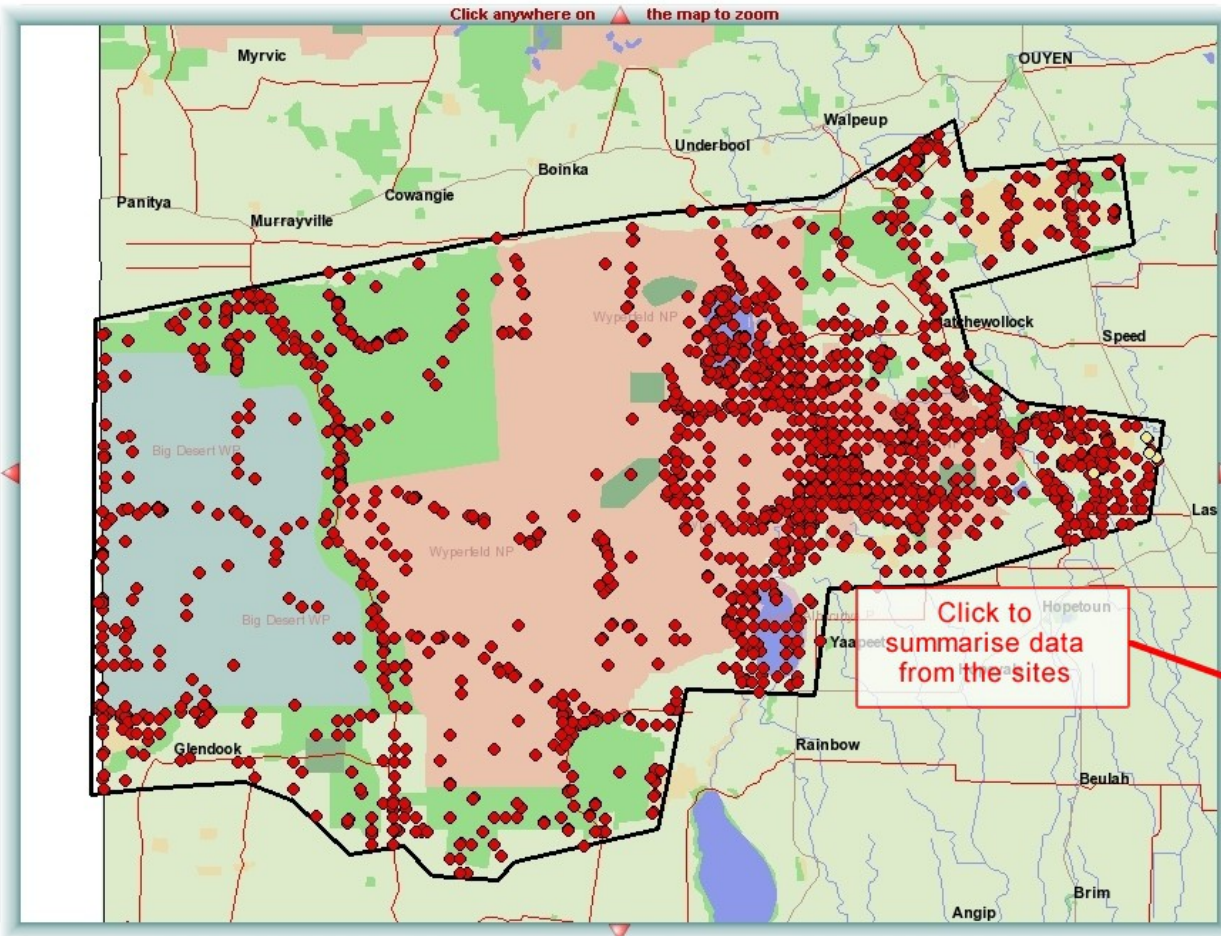
Data modified from Viridans Flora Information System

Back

Zoom x40 x35 x30 x25 x20 x10 x5 full

Print-Save PDF

Click anywhere on the map to zoom



19 km

- Main Roads
- Sealed Roads
- Unsealed Roads
- Tracks
- Built Up Areas
- Urban Parks
- Sea
- Rivers
- Lakes
- Reservoirs
- Swamps
- Private Land
- Public Land
- National Parks
- State Parks
- Regional Parks
- Wildlife Reserves
- Wilderness Areas
- Reference Areas

- Map Options**
- Sketch a Search Area
 - Search Sketched Area
 - Get all data from sites
 - Identify sites on map

Data modified from Viridans Flora Information System

```
javascript: findallsites1();
```

Close

Show Filter Options

List Title: VicFIS - Regional List

Print-Save PDF Save CSV

Acacia farinosa

Photo: © Paul Gullan/Viridans Images

General Appearance: A shrub, to 2 m tall, with stiff, narrow 'leaves' and yellow, globular flower clusters, arising from leaf axils on short stalks.

Leaves: (Phyllodes) Narrowly oblanceolate, slightly curved, to 7 cm x 4 mm, tip hard but blunt, 2-7 more or less prominent, veins.

Flowers: Yellow, clustered into stalked, globular heads, to 4 mm wide. Heads are white when in bud. (Jul Aug Sep Oct Nov)

Fruit: A more or less straight, cylindrical, pod, to 6 cm x 4 mm.

Authority: Lindl.

Conservation: [k] Poorly known in Victoria.

Other States: SA

Annual Rainfall: 371 to 527 mm

Warmest Temperatures: 29 to 31 °C

Coollest Temperatures: 3 to 5 °C



Plot Distribution Map

Show Larger Pictures

Display Picture Text and Map

A B C D E F G H I J K L M N O P Q R S T U V W X Y Z

F A V O	Species Names	Family	Last Record
v	<i>Abrotanella nivigena</i> - Snow-wort	Asteraceae	1 : 0.02%
*	<i>Abutilon theophrasti</i> - Chingma Lantern	Malvaceae	1 : 0.02%
r	<i>Acacia X grayana</i> - Wimmera Wattle	Mimosaceae	2 : 0.04%
	<i>Acacia acinacea s.l.</i> - Gold-dust Wattle	Mimosaceae	25 : 0.53%
v	<i>Acacia ancistrophylla var. lissophylla</i> - Dwarf Myall	Mimosaceae	1 : 0.02%
	<i>Acacia brachybotrya</i> - Grey Mulga	Mimosaceae	111 : 2.38%
r #	<i>Acacia cupularis</i> - Cup Wattle	Mimosaceae	2 : 0.04%
	<i>Acacia euthycarpa</i> - Wallowa	Mimosaceae	92 : 1.97%
	<i>Acacia euthycarpa subsp. euthycarpa</i> - Wallowa	Mimosaceae	14 : 0.3%
k	<i>Acacia farinosa</i> - Mealy Wattle	Mimosaceae	2 : 0.04%
f V v	<i>Acacia glandulicarpa</i> - Hairy-pod Wattle	Mimosaceae	2 : 0.04%
	<i>Acacia hakeoides</i> - Hakea Wattle	Mimosaceae	63 : 1.35%
	<i>Acacia halliana</i> - Hall's Wattle	Mimosaceae	5 : 0.1%
*	<i>Acacia leiophylla</i> - Western Wirilda	Mimosaceae	1 : 0.02%
	<i>Acacia ligulata</i> - Small Cooba	Mimosaceae	84 : 1.8%
r	<i>Acacia lineata</i> - Streaked Wattle	Mimosaceae	3 : 0.06%
	<i>Acacia microcarpa s.l.</i> - Manna Wattle	Mimosaceae	32 : 0.68%
	<i>Acacia microcarpa s.s.</i> - Manna Wattle	Mimosaceae	1 : 0.02%
	<i>Acacia montana</i> - Mallee Wattle	Mimosaceae	12 : 0.25%
	<i>Acacia myrtifolia</i> - Myrtle Wattle	Mimosaceae	4 : 0.08%

1138 Species

Copyright © Viridans Biological Databases

Refine this List Reset all Filters

Display Order Conservation General Appearance Flower Type Flower Colour

Scientific Name Order All Categories All Life Forms All Flower Types All Flower Colors

Flowering Time Leaf Shape and Size Classification Miscellaneous

All Flowering Times All Leaf Types All Groups All Types

Acacia

All Flowering Times

- All Flowering Times
- January
- February
- March
- April
- May
- June
- July
- August
- September
- October
- November
- December
- Spring
- Summer
- Autumn
- Winter

Select Winter flowering

A shrub, to 2 m tall, with stiff, narrow leaves and yellow, globular flower clusters, arising from the stems. The leaves are narrow, oblanceolate, slightly curved, to 7 cm x 4 mm, tip hard but blunt, 2-7 more or less per node. The flowers are arranged into stalked, globular heads, to 4 mm wide. Heads are white when in bud. (Jul Aug)

straight, cylindrical, pod, to 6 cm x 4 mm.

only known in Victoria.

to 527 mm

es: 29 to 31 °C

3 to 5 °C



Plot Distribution Map Show Larger Pictures Display Picture Text and Map

A B C D E F G H I J K L M N O P Q R S T U V W X Y Z

F A V O	Species Names	Family	Last Record
v	<i>Abrotanella nivigena</i> - Snow-wort	Asteraceae	1 : 0.02%
*	<i>Abutilon theophrasti</i> - Chingma Lantern	Malvaceae	1 : 0.02%
r	<i>Acacia X grayana</i> - Wimmera Wattle	Mimosaceae	2 : 0.04%
	<i>Acacia acinacea s.l.</i> - Gold-dust Wattle	Mimosaceae	25 : 0.53%
v	<i>Acacia ancistrophylla var. lissophylla</i> - Dwarf Myall	Mimosaceae	1 : 0.02%
	<i>Acacia brachybotrya</i> - Grey Mulga	Mimosaceae	111 : 2.38%
r #	<i>Acacia cupularis</i> - Cup Wattle	Mimosaceae	2 : 0.04%
	<i>Acacia euthycarpa</i> - Wallowa	Mimosaceae	92 : 1.97%
	<i>Acacia euthycarpa subsp. euthycarpa</i> - Wallowa	Mimosaceae	14 : 0.3%
k	<i>Acacia farinosa</i> - Mealy Wattle	Mimosaceae	2 : 0.04%
f V v	<i>Acacia glandulicarpa</i> - Hairy-pod Wattle	Mimosaceae	2 : 0.04%
	<i>Acacia hakeoides</i> - Hakea Wattle	Mimosaceae	63 : 1.35%
	<i>Acacia halliana</i> - Hall's Wattle	Mimosaceae	5 : 0.1%
*	<i>Acacia leiophylla</i> - Western Wirilda	Mimosaceae	1 : 0.02%

Refine this List Reset all Filters

Display Order: Scientific Name Order

Flowering Time: Winter

Conservation: All Categories

Leaf Shape and Size: All Leaf Types

General Appearance: Medium to Small Shrub

Flower Type: All Flower Types

Flower Colour: All Flower Colors

Miscellaneous: All Types

Acacia farinosa

General Appearance: A shrub, to 2 m tall, with stiff, narrow 'leaves' from leaf axils on short stalks.

Leaves: (Phyllodes) Narrowly oblanceolate, slightly curved, to 7 cm x prominent, veins.

Flowers: Yellow, clustered into stalked, globular heads, to 4 mm wide. Heads are white when in bud. (Jul Aug Sep Oct Nov)

Fruit: A more or less straight, cylindrical, pod, to 6 cm x 4 mm.

Authority: Lindl.

Conservation: [k] Poorly known in Victoria.

Other States: SA

Annual Rainfall: 371 to 527 mm

Warmest Temperatures: 29 to 31 °C

Coollest Temperatures: 3 to 5 °C

Select Medium to Small Shrub



Plot Distribution Map Show Larger Pictures Display Picture Text and Map

A B C D E F G H I J K L M N O P Q R S T U V W X Y Z

F A V O	Species Names	Family	Last Record
v	<i>Abrotanella nivigena</i> - Snow-wort	Asteraceae	1 : 0.02%
*	<i>Abutilon theophrasti</i> - Chingma Lantern	Malvaceae	1 : 0.02%
r	<i>Acacia X grayana</i> - Wimmera Wattle	Mimosaceae	2 : 0.04%
	<i>Acacia acinacea s.l.</i> - Gold-dust Wattle	Mimosaceae	25 : 0.53%
v	<i>Acacia ancistrophylla var. lissophylla</i> - Dwarf Myall	Mimosaceae	1 : 0.02%
	<i>Acacia brachybotrya</i> - Grey Mulga	Mimosaceae	111 : 2.38%
r #	<i>Acacia cupularis</i> - Cup Wattle	Mimosaceae	2 : 0.04%
	<i>Acacia euthycarpa</i> - Wallowa	Mimosaceae	92 : 1.97%
	<i>Acacia euthycarpa subsp. euthycarpa</i> - Wallowa	Mimosaceae	14 : 0.3%
k	<i>Acacia farinosa</i> - Mealy Wattle	Mimosaceae	2 : 0.04%
f V v	<i>Acacia glandulicarpa</i> - Hairy-pod Wattle	Mimosaceae	2 : 0.04%
	<i>Acacia hakeoides</i> - Hakea Wattle	Mimosaceae	63 : 1.35%
	<i>Acacia halliana</i> - Hall's Wattle	Mimosaceae	5 : 0.1%
*	<i>Acacia leiophylla</i> - Western Wirilda	Mimosaceae	1 : 0.02%

Refine this List Reset all Filters

Display Order: Scientific Name Order

Flowering Time: Winter

Conservation: All Categories

Leaf Shape and Size: All Leaf Types

General Appearance: Medium to Small Shrub

Classification: All Groups

Flower Type: All Flower Types

Miscellaneous: All Types

Flower Colour: All Flower Colors

Acacia farinosa

General Appearance: A shrub to 2 m tall, with stiff, narrow 'leaves' and yellow, globular flower clusters, arising from leaf axils on short stalks.

Leaves: (Phyllodes) Narrowly obanceolate, slightly curved, to 7 cm x 4 mm, tip hard but blunt, 2-7 more or less prominent, veins.

Flowers: Yellow, clustered in stalked, globular heads, to 4 mm wide. Heads are white when in bud. (Jul Aug Sep Oct Nov)

Fruit: A more or less straight cylindrical, pod, to 6 cm x 4 mm.

Authority: Lindl.

Conservation: [k] Poorly known in Victoria.

Other States: SA

Annual Rainfall: 371 to 527 mm

Warmest Temperatures: 29 to 31 °C

Coollest Temperatures: 3 to 5 °C

Apply the selected filters



Plot Distribution Map Show Larger Pictures Display Picture Text and Map

- A
- B
- C
- D
- E
- F
- G
- H
- I
- J
- K
- L
- M
- N
- O
- P
- Q
- R
- S
- T
- U
- V
- W
- X
- Y
- Z

F A V O	Species Names	Family	Last Record
v	<i>Abrotanella nivigena</i> - Snow-wort	Asteraceae	1 : 0.02%
*	<i>Abutilon theophrasti</i> - Chingma Lantern	Malvaceae	1 : 0.02%
r	<i>Acacia X grayana</i> - Wimmera Wattle	Mimosaceae	2 : 0.04%
	<i>Acacia acinacea s.l.</i> - Gold-dust Wattle	Mimosaceae	25 : 0.53%
v	<i>Acacia ancistrophylla var. lissophylla</i> - Dwarf Myall	Mimosaceae	1 : 0.02%
	<i>Acacia brachybotrya</i> - Grey Mulga	Mimosaceae	111 : 2.38%
r #	<i>Acacia cupularis</i> - Cup Wattle	Mimosaceae	2 : 0.04%
	<i>Acacia euthycarpa</i> - Wallowa	Mimosaceae	92 : 1.97%
	<i>Acacia euthycarpa subsp. euthycarpa</i> - Wallowa	Mimosaceae	14 : 0.3%
k	<i>Acacia farinosa</i> - Mealy Wattle	Mimosaceae	2 : 0.04%
f V v	<i>Acacia glandulicarpa</i> - Hairy-pod Wattle	Mimosaceae	2 : 0.04%
	<i>Acacia hakeoides</i> - Hakea Wattle	Mimosaceae	63 : 1.35%
	<i>Acacia halliana</i> - Hall's Wattle	Mimosaceae	5 : 0.1%
*	<i>Acacia leiophylla</i> - Western Wirilda	Mimosaceae	1 : 0.02%

Acacia brachybotrya

General Appearance: A shrub, to 2.5 m tall, with small, rounded 'leaves' and golden-yellow, globular flower clusters, arising from leaf axils on short stalks.
Leaves: (Phyllodes) Obovate, fairly stiff, slightly asymmetric, to 3 cm x 13 mm, blue-green, tip rounded with a hard point, midvein more or less prominent.
Flowers: Clustered into stalked, globular heads, to 6 mm wide. (Jul Aug Sep Oct)
Fruit: A more or less straight, cylindrical, pod, to 9 cm x 8 mm, slightly constricted between the seeds.
Notes: Records near Melbourne and Canberra are probably naturalised.
Authority: Benth.
Other States: NSW SA
Commonly Associated Trees: Eucalyptus leptophylla, Eucalyptus costata subsp. murrayana, Eucalyptus dumosa, Eucalyptus socialis
Annual Rainfall: 299 to 387 mm
Warmest Temperatures: 30 to 32 °C



Alter the title then click here

This list contains only species which have been categorised as shrubs that flower in winter

Plot Distribution Map Show Larger Pictures Display Picture Text and Map

A B C D E F G H I J K L M N O P Q R S T U V W X Y Z

F A V O	Species Names	Family	Last Record
r	<i>Acacia X grayana</i> - Wimmera Wattle	Mimosaceae	2 : 0.04%
	<i>Acacia acinacea s.l.</i> - Gold-dust Wattle	Mimosaceae	25 : 0.53%
	<i>Acacia brachybotrya</i> - Grey Mulga	Mimosaceae	111 : 2.38%
	<i>Acacia euthycarpa</i> - Wallowa	Mimosaceae	92 : 1.97%
k	<i>Acacia farinosa</i> - Mealy Wattle	Mimosaceae	2 : 0.04%
f V v	<i>Acacia glandulicarpa</i> - Hairy-pod Wattle	Mimosaceae	2 : 0.04%
	<i>Acacia hakeoides</i> - Hakea Wattle	Mimosaceae	63 : 1.35%
	<i>Acacia halliana</i> - Hall's Wattle	Mimosaceae	5 : 0.1%
	<i>Acacia myrtifolia</i> - Myrtle Wattle	Mimosaceae	4 : 0.08%
	<i>Acacia paradoxa</i> - Hedge Wattle	Mimosaceae	1 : 0.02%
	<i>Acacia rigens</i> - Nealie	Mimosaceae	76 : 1.63%
	<i>Acacia sclerophylla var. sclerophylla</i> - Hard-leaf Wattle	Mimosaceae	24 : 0.51%
	<i>Acacia spinescens</i> - Spiny Wattle	Mimosaceae	116 : 2.49%
v	<i>Acacia trineura</i> - Three-nerve Wattle	Mimosaceae	18 : 0.38%
	<i>Acacia wilhelmiana</i> - Dwarf Nealie	Mimosaceae	1 : 0.02%
	<i>Acrotriche affinis</i> - Ridged Ground-berry	Ericaceae	67 : 1.44%
	<i>Acrotriche serrulata</i> - Honey-pots	Ericaceae	1 : 0.02%
	<i>Adriana urticoides var. hookeri</i> - Mallee Bitter-bush	Euphorbiaceae	29 : 0.62%
	<i>Allocasuarina mackliniana</i> - Western Sheoak	Casuarinaceae	23 : 0.49%
	<i>Allocasuarina mackliniana subsp. xerophila</i> - Western Sheoak	Casuarinaceae	8 : 0.17%

